

UNION CONNECTION



FEATURES

- Located in Union, one of the fastest-growing affluent markets in Northern Kentucky
- Close proximity to I-75 with signalized access on expanded US-42
- Join a new Kroger Marketplace, Braxton Brewing Co, Graeter's Ice Cream, Dewey's Pizza, Boomtown Biscuits & Whiskey, Buffalo Wings & Rings, Orangetheory Fitness, Chipotle, Starbucks, and Panera
- Just North of Union Promenade, a new 62-acre mixed-use development featuring 298 apartments and 44 patio homes, as well as the new \$10MM, 25,000 sq. ft. Cincinnati Children's Hospital, its first location in Northern Kentucky
- 16 new residential subdivisions with over 780 homes currently under construction with a median sale price of \$425,00

1,260 SQ. FT. FOR LEASE
\$32/SQ. FT.

TRAFFIC COUNTS

Street/Intersection	VPD
US 42 & Richmond Dr	30,498
US 42 & Fowlers Ln	14,347

DEMOGRAPHICS

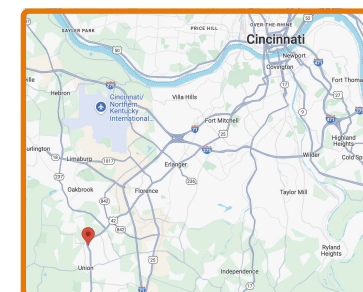
Radius	1 Mile	3 Mile	5 Mile
Population	9,979	55,044	112,130
Daytime Population	7,194	47,136	117,209
Households	3,849	20,007	42,088
Average HH Income	\$130,559	\$128,235	\$111,837

Todd Vollmer

(513) 505-1902

TVollmer@MidlandRetail.com

Contact Card



9039 US-42 Ste B
Union, KY 41091

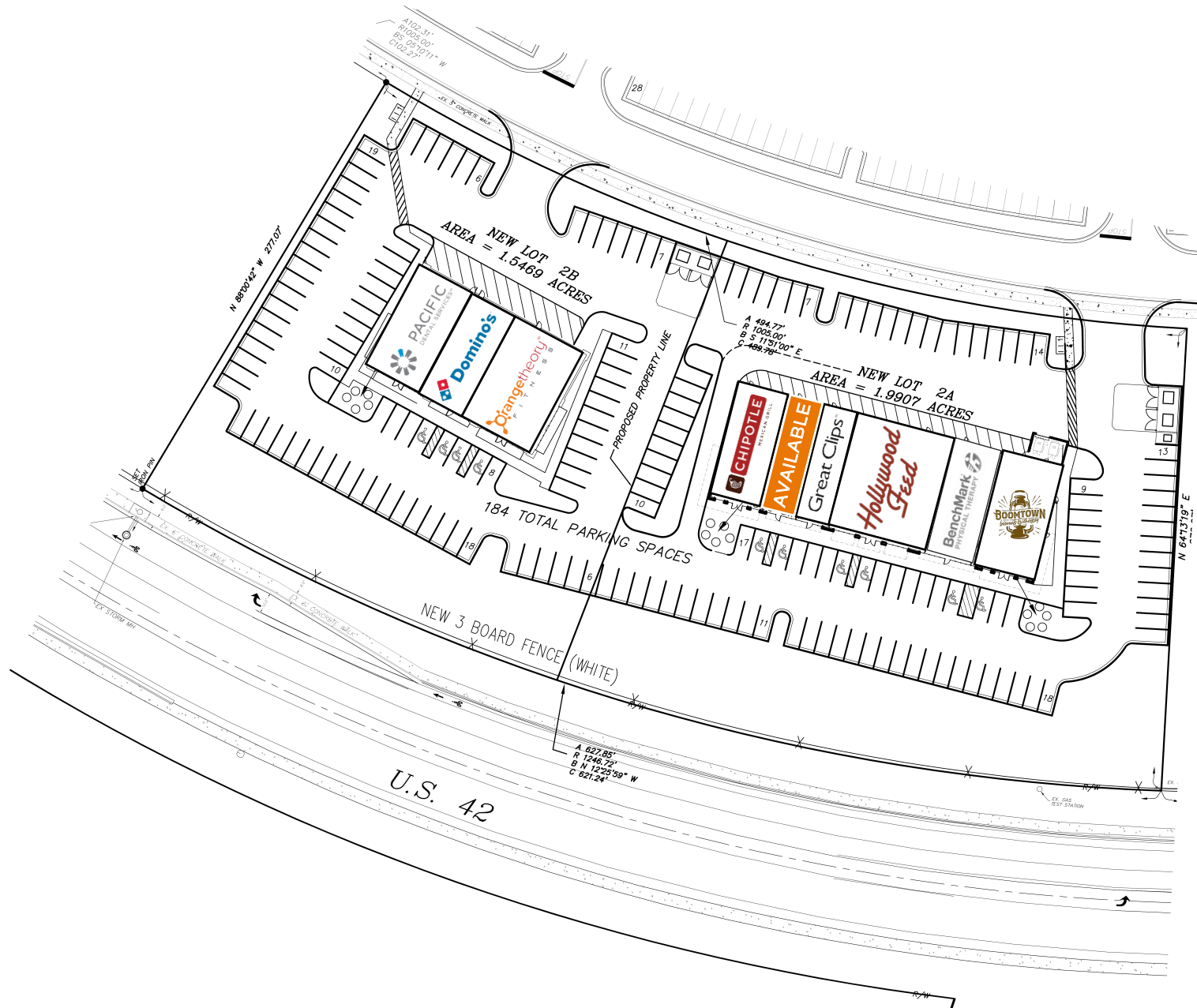
**MIDLAND
RETAIL**

MidlandRetail.com

(513) 891-2526

697 Wilmer Ave Ste C
Cincinnati, OH 45226

Follow Us



SITE PLAN

UNION CONNECTION

1,260 Sq. Ft. For Lease



Todd Vollmer

(513) 891-2526
MidlandRetail.com

(513) 505-1902
TVollmer@MidlandRetail.com



TRADE AREA
UNION CONNECTION
 1,260 Sq. Ft. For Lease



Todd Vollmer

(513) 891-2526
 MidlandRetail.com

(513) 505-1902
 TVollmer@MidlandRetail.com



IMAGES
UNION CONNECTION
 1,260 Sq. Ft. For Lease



Todd Vollmer

(513) 891-2526
 MidlandRetail.com

(513) 505-1902
 TVollmer@MidlandRetail.com



2024 Demographics

9039 United States Highway 42 E, Union,
Rings: 1, 3, 5 mile radii

Latitude: 38.96277
Longitude: -84.67941

Population	1 mile	3 miles	5 miles
2024 Total Population	9,979	55,044	112,130
2029 Total Population	11,214	57,964	116,122
2023-2028 Population: Annual Growth Rate	2.36%	1.04%	0.70%
2024 Total Daytime Population	7,194	47,136	117,209
2024 Female Population	5,107	27,464	56,125
2024 Male Population	4,872	27,580	56,005
2024 Median Age	39.6	38.9	38.0
Households	1 mile	3 miles	5 miles
2024 Total Households	3,849	20,007	42,088
2029 Total Households	4,319	21,170	43,778
2023-2028 Households: Annual Growth Rate	2.33%	1.14%	0.79%
2024 Average Household Size	2.59	2.73	2.64
2024 Dominant Tapestry Segment Name	Workday Drive	Workday Drive	Workday Drive
Income	1 mile	3 miles	5 miles
2024 Average Household Income	\$130,559	\$128,235	\$111,837
2029 Average Household Income	\$144,758	\$143,492	\$126,463
2024 Median Household Income	\$109,760	\$100,476	\$84,001
2029 Median Household Income	\$118,149	\$109,264	\$95,932
2023-2028 Median Household Income: Annual Growth	1.48%	1.69%	2.69%
2024 Per Capita Income	\$48,335	\$46,726	\$41,846
2029 Per Capita Income	\$53,651	\$52,545	\$47,531
2023-2028 Per Capita Income: Annual Growth Rate	2.11%	2.38%	2.58%
Home Value	1 mile	3 miles	5 miles
2024 Average Home Value	\$290,452	\$288,316	\$253,487
2029 Average Home Value	\$335,601	\$343,920	\$329,720
2024 Median Home Value	\$290,452	\$288,316	\$253,487
2029 Median Home Value	\$328,519	\$326,640	\$297,205
Race	1 mile	3 miles	5 miles
Diversity Index	37.8	37.6	42.7
Educational Attainment	1 mile	3 miles	5 miles
Less than 9th Grade	86	570	1,367
9-12th Grade/No Diploma	18	591	2,403
High School Diploma	1,852	8,527	19,023
GED/Alternative Credential	222	1,559	3,383
Some College/No Degree	1,179	6,341	13,550
Associate's Degree	592	3,484	7,450
Bachelor's Degree	1,507	9,614	17,829
Graduate/Professional Degree	1,183	6,130	9,853
Educational Attainment Base	6,639	36,816	74,858
Business Summary	1 mile	3 miles	5 miles
Total Businesses	206	1,315	3,677
Total Employees	1,749	15,063	46,569
Total (SIC01-99) Sales (\$000)	\$265,254,932	\$2,970,235,950	\$9,453,804,150
Total Expenditures (Consumer Spending)	1 mile	3 miles	5 miles
2024 Annual Budget Expenditures	\$436,296,515	\$2,228,383,708	\$4,116,815,641
2029 Annual Budget Expenditures	\$542,917,773	\$2,637,965,083	\$4,841,074,715
2024 Retail Goods	\$17,167,927	\$88,923,158	\$163,850,841
2029 Retail Goods	\$181,222,672	\$871,513,887	\$1,604,600,490