

FREESTANDING BUILDING

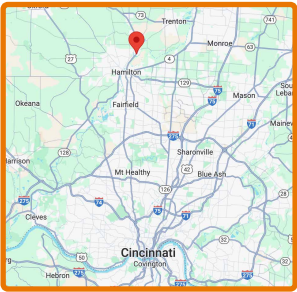
[View Listing](#)



Todd Vollmer



- [Call Todd](#)
(513) 505-1902
- [Email Todd](#)
TVollmer@MidlandRetail.com
- [Download Todd's Contact Card](#)



199 S Riverside Dr
New Miami, OH 45011

8,320 SQ FT FOR LEASE

FEATURES

- Great opportunity for retail, office, or businesses requiring a showroom, storage, and ample parking
- Built in 2013 on 1.31 acres, the building is in excellent condition
- Pylon sign fronting Riverside Road
- Open floor plan, back storage room, office, and 2 restrooms
- 3 Entrances and 32 parking spaces with plenty of room for truck deliveries

TRAFFIC COUNTS

Street/Intersection	VPD
S Riverside Dr / N 3rd St	9,336
State Route 129 / High St	40,585

DEMOGRAPHICS

Radius	1 Mile	3 Mile	5 Mile
Population	2,747	44,404	106,730
Daytime Population	2,165	40,578	89,145
Households	1,016	17,768	40,837
Average HH Income	\$75,809	\$83,560	\$89,430



- [MidlandRetail.com](#)
- (513) 891-2526
- 697 Wilmer Ave Suite C
Cincinnati, OH 45226



TRADE AREA

FREESTANDING BUILDING IN NEW MIAMI

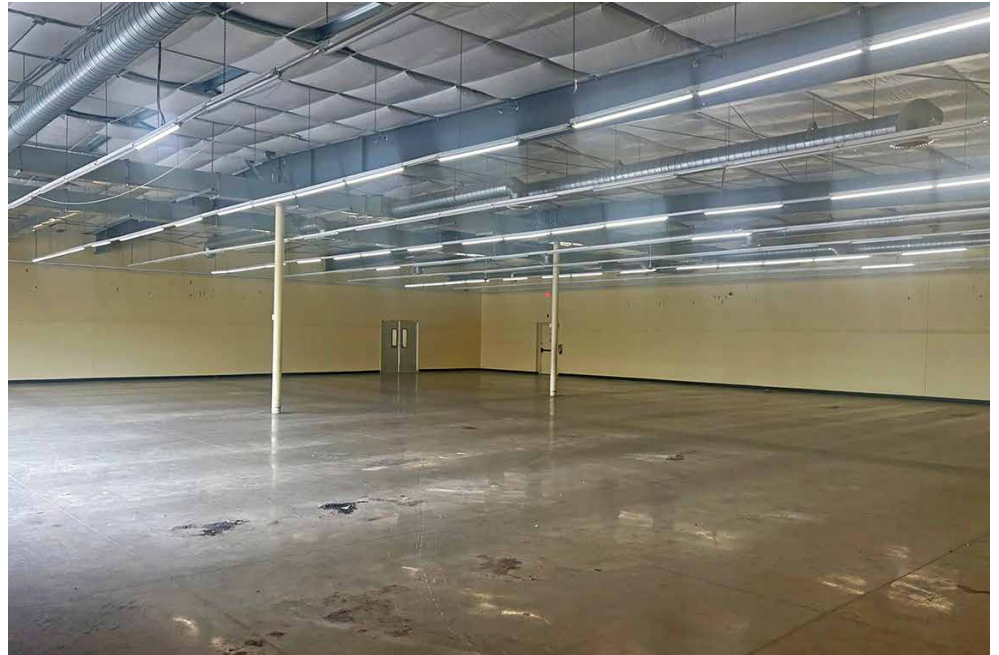
8,320 Sq Ft



(513) 891-2526
MidlandRetail.com

Todd Vollmer

(513) 505-1902
TVollmer@MidlandRetail.com



IMAGES

FREESTANDING BUILDING IN NEW MIAMI

8,320 Sq Ft



Todd Vollmer

(513) 891-2526
MidlandRetail.com

(513) 505-1902
TVollmer@MidlandRetail.com



2024 Demographics

Freestanding Building
 199 S Riverside Dr, Hamilton, Ohio, 45011
 Rings: 1, 3, 5 mile radii

Latitude: 39.42939
 Longitude: -84.53711

Population	1 mile	3 miles	5 miles
2024 Total Population	2,747	44,404	106,730
2029 Total Population	2,708	44,189	105,598
2023-2028 Population: Annual Growth Rate	-0.29%	-0.10%	-0.21%
2024 Total Daytime Population	2,165	40,578	89,145
2024 Female Population	1,344	22,256	53,514
2024 Male Population	1,403	22,148	53,216
2024 Median Age	38.3	39.1	38.7
Households	1 mile	3 miles	5 miles
2024 Total Households	1,016	17,768	40,837
2029 Total Households	1,016	17,861	40,823
2023-2028 Households: Annual Growth Rate	0.00%	0.10%	-0.01%
2024 Average Household Size	2.70	2.45	2.57
2024 Dominant Tapestry Segment Name	Traditional Living	Traditional Living	Hometown Heritage
Income	1 mile	3 miles	5 miles
2024 Average Household Income	\$75,809	\$83,560	\$89,430
2029 Average Household Income	\$87,205	\$96,750	\$104,349
2024 Median Household Income	\$57,188	\$62,868	\$66,850
2029 Median Household Income	\$64,389	\$72,410	\$77,797
2023-2028 Median Household Income: Annual Growth	2.40%	2.87%	3.08%
2024 Per Capita Income	\$28,581	\$33,139	\$34,383
2029 Per Capita Income	\$33,353	\$38,713	\$40,516
2023-2028 Per Capita Income: Annual Growth Rate	3.14%	3.16%	3.34%
Home Value	1 mile	3 miles	5 miles
2024 Average Home Value	\$91,176	\$247,112	\$252,325
2029 Average Home Value	\$193,583	\$344,041	\$351,246
2024 Median Home Value	\$91,176	\$247,112	\$252,325
2029 Median Home Value	\$120,274	\$309,722	\$324,469
Race	1 mile	3 miles	5 miles
Diversity Index	25.2	50.4	51.9
Educational Attainment	1 mile	3 miles	5 miles
Less than 9th Grade	97	1,138	2,324
9-12th Grade/No Diploma	257	2,674	4,984
High School Diploma	931	11,560	25,692
GED/Alternative Credential	105	1,676	3,699
Some College/No Degree	265	5,149	12,708
Associate's Degree	104	2,344	6,507
Bachelor's Degree	71	4,314	11,040
Graduate/Professional Degree	23	1,690	5,445
Educational Attainment Base	1,853	30,545	72,399
Business Summary	1 mile	3 miles	5 miles
Total Businesses	50	1,437	2,705
Total Employees	637	17,774	34,291
Total (SIC01-99) Sales (\$000)	\$289,251,433	\$2,264,091,886	\$5,747,437,707
Total Expenditures (Consumer Spending)	1 mile	3 miles	5 miles
2024 Annual Budget Expenditures	\$69,084,862	\$1,312,952,675	\$3,222,436,783
2029 Annual Budget Expenditures	\$79,469,010	\$1,528,481,823	\$3,758,769,512
2024 Retail Goods	\$2,696,191	\$51,535,728	\$127,320,924
2029 Retail Goods	\$26,747,425	\$507,782,581	\$1,249,421,095