

SPRINGBORO LAND

[View Listing](#)



1.68 ACRES FOR SALE (INVESTMENT OR OWNER USER), GROUND LEASE, OR BUILD-TO-SUIT

TRAFFIC COUNTS

Street/Intersection	VPD
State Route 741/Main St	19,667 VPD
W Lytle Five Points Rd	7,965 VPD

DEMOGRAPHICS

Radius	1 Mile	3 Mile	5 Mile
Population	6,824	46,212	106,592
Daytime Population	6,058	43,070	108,033
Households	2,533	17,898	43,625
Average HH Income	\$159,022	\$152,847	\$131,536

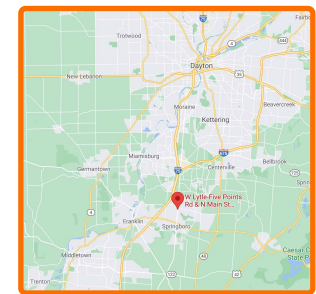
FEATURES

- Springboro is a highly desirable, growing market located at the geographic center of the Cincinnati-Dayton Metroplex and is the 14th largest urban area in the United States
- Location is great for retail, office, or medical
- Monument signage available at Main St. and W Lytle Five Points Rd. and also at the property entrance
- Located next to Dorothy Lane Market off Main St.
- Only 1.5 miles to I-75 and Austin Landing

Todd Vollmer



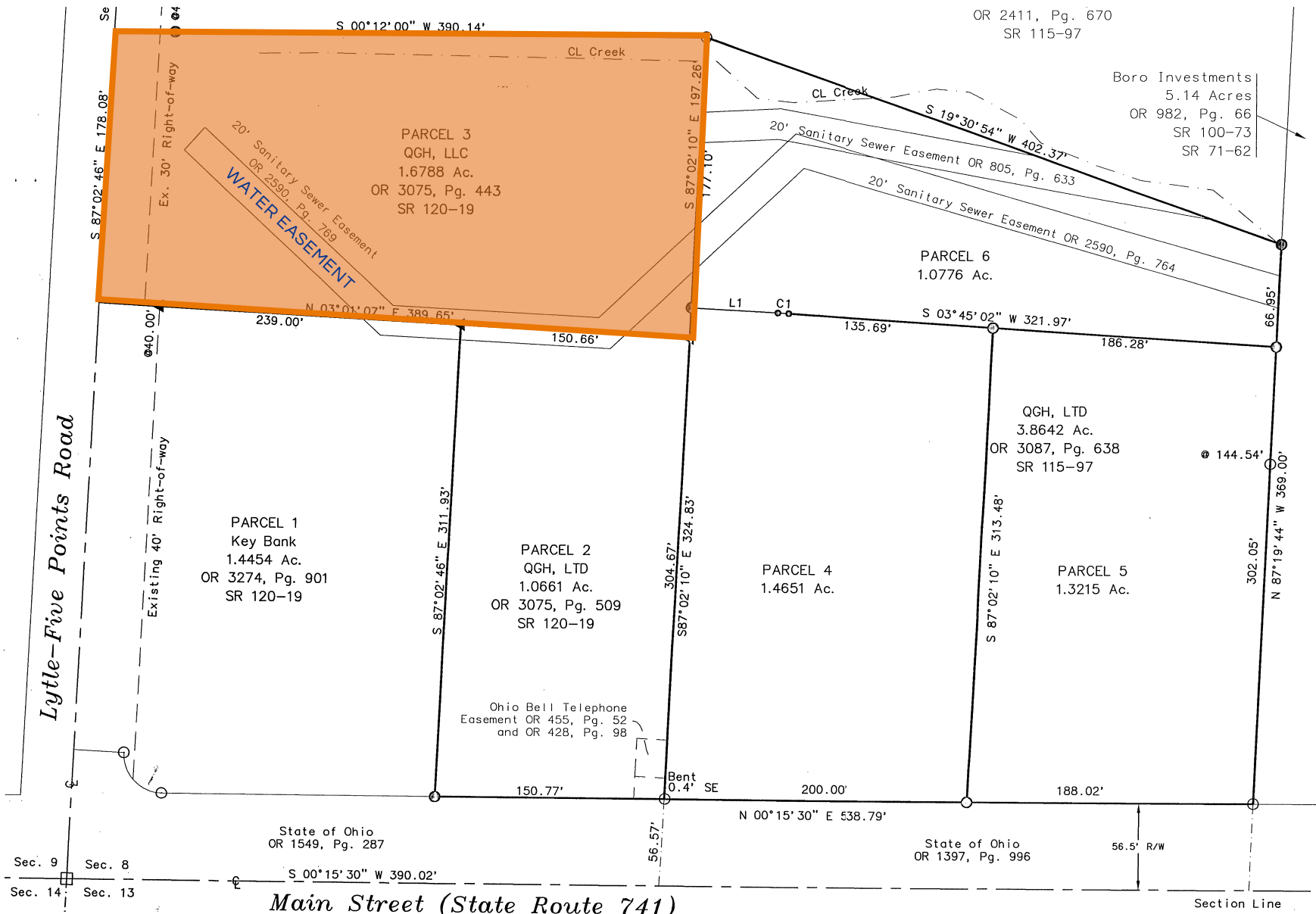
- [Call Todd](#)
(513) 505-1902
- [Email Todd](#)
TVollmer@MidlandRetail.com
- [Download Todd's Contact Card](#)



St Rt 741 & W Lytle Five Points Rd
Springboro, Ohio 45066

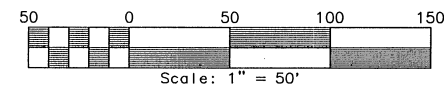


- MidlandRetail.com
- (513) 891-2526
- 697 Wilmer Ave Suite C
- Cincinnati, OH 45226



NUMBER	DIRECTION	DISTANCE
L1	S 02°57'19" W	56.88'

NUMBER	RADIUS	ARC LENGTH	CHORD BEARING	CHORD LENGTH	DELTA ANGLE	TANGENT
C1	520.00'	7.22'	N 03°21'10" E	7.22'	00°47'44"	3.61'



SITE PLAN

SPRINGBORO LAND

1.68 Acres For Sale, Ground Lease, or Build-to-Suit



Todd Vollmer

(513) 891-2526
MidlandRetail.com

(513) 505-1902
TVollmer@MidlandRetail.com



TRADE AREA

SPRINGBORO LAND

1.68 Acres For Sale, Ground Lease, or Build-to-Suit



(513) 891-2526
MidlandRetail.com

Todd Vollmer

(513) 505-1902
TVollmer@MidlandRetail.com



Sources: Esri, HERE, Garmin, USGS, Intermap, INCREMENT P, NRCan, Esri Japan, METI, Esri China (Hong Kong), Esri Korea, Esri (Thailand), NGCC, (c) OpenStreetMap contributors, and the GIS User Community, Warren County GIS

PARCEL

SPRINGBORO LAND

1.68 Acres For Sale, Ground Lease, or Build-to-Suit



(513) 891-2526
MidlandRetail.com

Todd Vollmer

(513) 505-1902
TVollmer@MidlandRetail.com



2024 Demographics

Springboro Land

1353-1359 W Lytle 5 Points Rd, Springboro, Ohio, 45066

Rings: 1, 3, 5 mile radii

Latitude: 39.57461

Longitude: -84.22941

Population	1 mile	3 miles	5 miles
2024 Total Population	6,824	46,212	106,592
2029 Total Population	7,266	47,796	108,978
2023-2028 Population: Annual Growth Rate	1.26%	0.68%	0.44%
2024 Total Daytime Population	6,058	43,070	108,033
2024 Female Population	3,449	23,284	53,974
2024 Male Population	3,375	22,928	52,618
2024 Median Age	41.9	39.7	40.5
Households	1 mile	3 miles	5 miles
2024 Total Households	2,533	17,898	43,625
2029 Total Households	2,742	18,725	45,034
2023-2028 Households: Annual Growth Rate	1.60%	0.91%	0.64%
2024 Average Household Size	2.69	2.57	2.43
2024 Dominant Tapestry Segment Name	Boomburbs	Boomburbs	Boomburbs
Income	1 mile	3 miles	5 miles
2024 Average Household Income	\$159,022	\$152,847	\$131,536
2029 Average Household Income	\$179,808	\$173,458	\$151,114
2024 Median Household Income	\$122,332	\$110,667	\$95,647
2029 Median Household Income	\$139,559	\$124,373	\$107,923
2023-2028 Median Household Income: Annual Growth	2.67%	2.36%	2.44%
2024 Per Capita Income	\$60,283	\$59,090	\$53,641
2029 Per Capita Income	\$69,271	\$67,812	\$62,225
2023-2028 Per Capita Income: Annual Growth Rate	2.82%	2.79%	3.01%
Home Value	1 mile	3 miles	5 miles
2024 Average Home Value	\$331,199	\$330,852	\$303,678
2029 Average Home Value	\$390,200	\$397,966	\$379,536
2024 Median Home Value	\$331,199	\$330,852	\$303,678
2029 Median Home Value	\$363,224	\$367,824	\$351,685
Race	1 mile	3 miles	5 miles
Diversity Index	31.2	38.2	36.7
Educational Attainment	1 mile	3 miles	5 miles
Less than 9th Grade	27	318	1,110
9-12th Grade/No Diploma	45	748	2,542
High School Diploma	703	5,759	15,558
GED/Alternative Credential	93	669	2,155
Some College/No Degree	711	4,345	11,026
Associate's Degree	377	2,641	6,585
Bachelor's Degree	1,524	9,390	19,499
Graduate/Professional Degree	1,117	7,395	15,190
Educational Attainment Base	4,597	31,265	73,665
Business Summary	1 mile	3 miles	5 miles
Total Businesses	252	1,450	4,042
Total Employees	2,535	18,971	53,069
Total (SIC01-99) Sales (\$000)	\$299,935,927	\$3,233,381,502	\$10,088,909,626
Total Expenditures (Consumer Spending)	1 mile	3 miles	5 miles
2024 Annual Budget Expenditures	\$346,744,999	\$2,368,143,907	\$5,005,936,138
2029 Annual Budget Expenditures	\$424,382,225	\$2,810,542,536	\$5,935,153,197
2024 Retail Goods	\$13,688,848	\$95,416,056	\$198,986,251
2029 Retail Goods	\$140,709,933	\$923,009,536	\$1,961,135,783